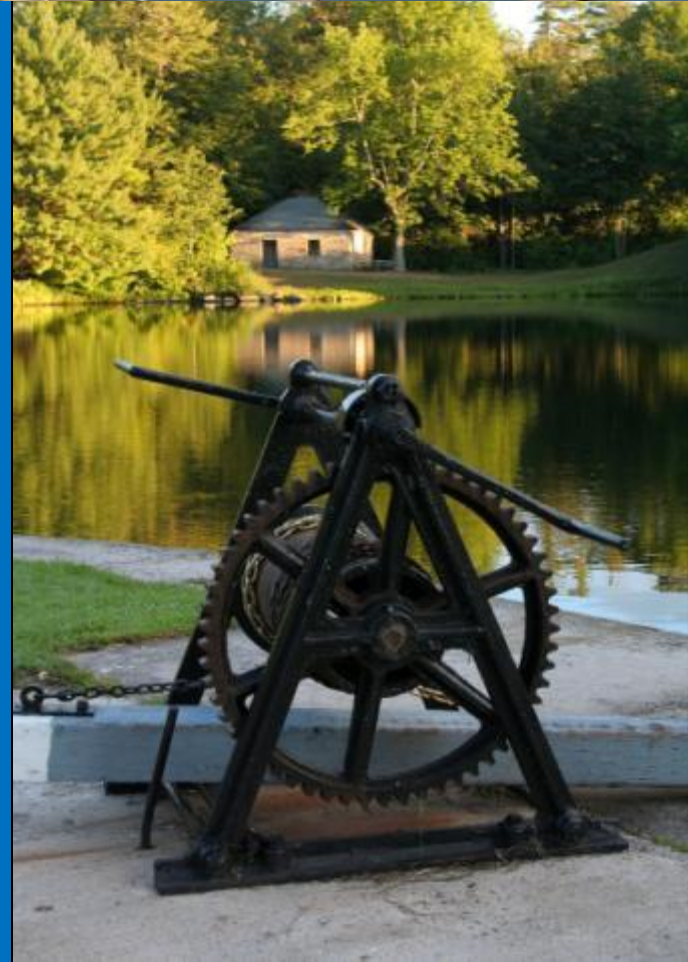




RIDEAU CORRIDOR LANDSCAPE STRATEGY

Rideau Corridor Landscape Strategy: Collaborating to protect Ontario's UNESCO World Heritage Site

World Canals Conference, Toulouse
18 September 2013



**An ACCURATE MAP of
NORTH
AMERICA**

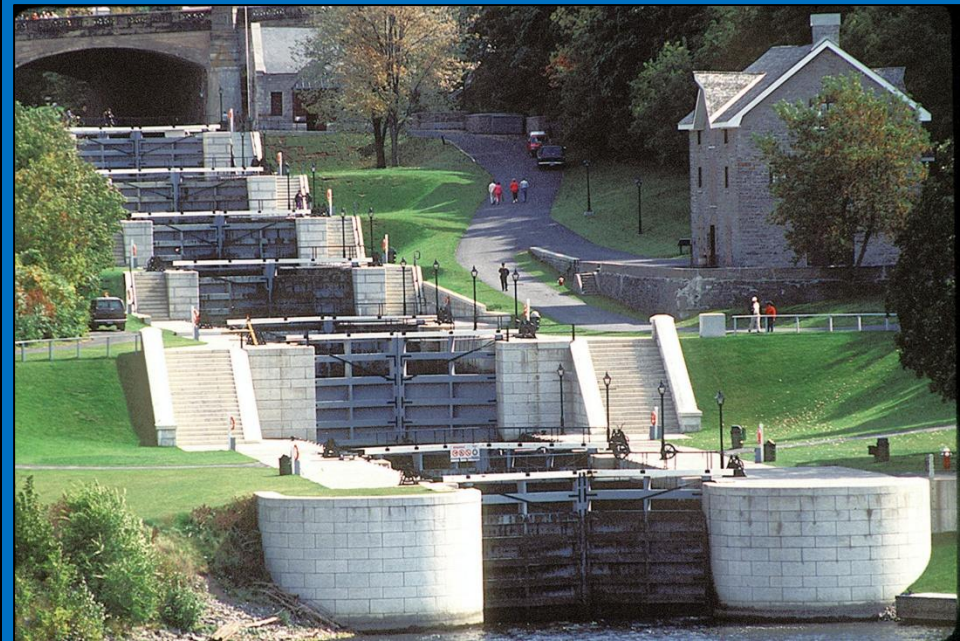
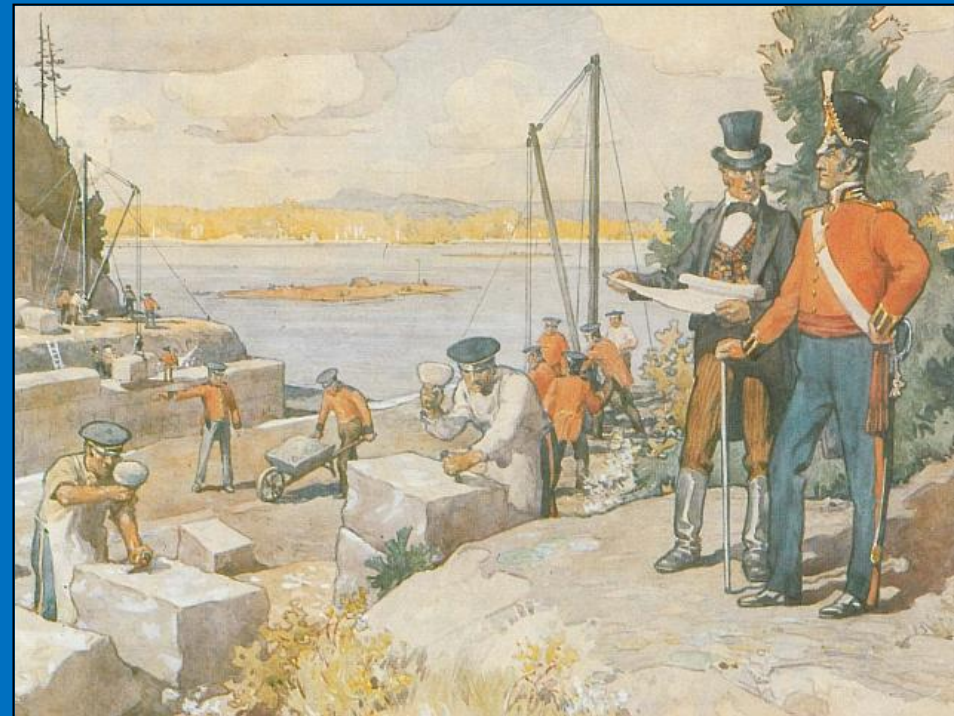
*Drawn from the best
Modern Maps
and Charts and
regulated by
John Churchill*

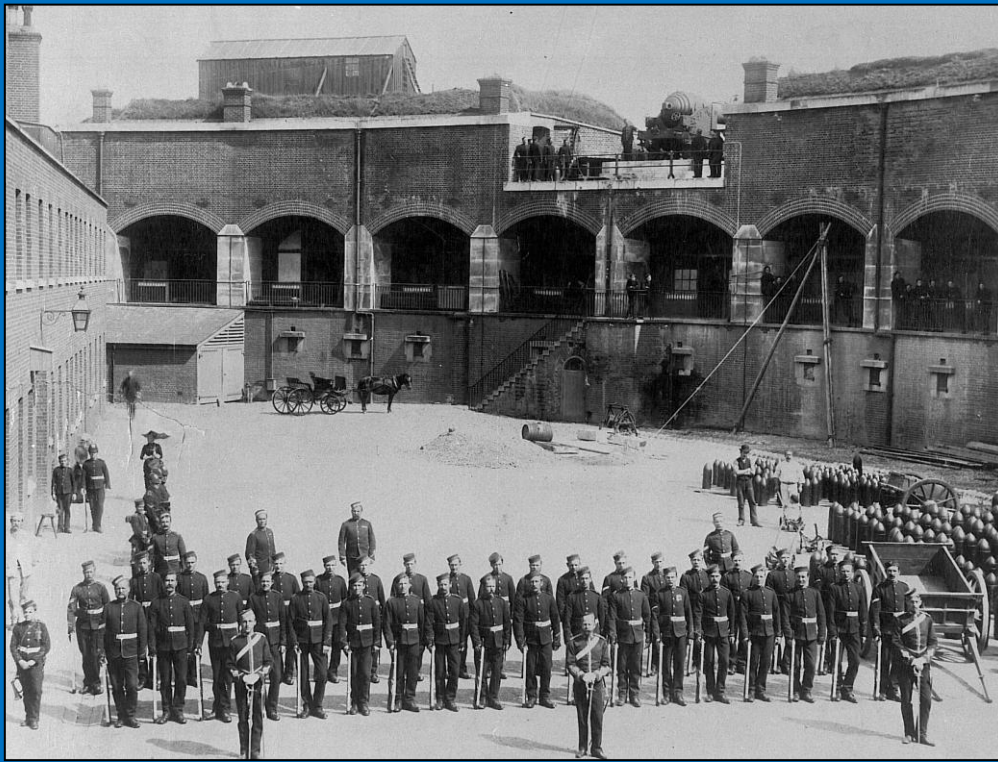


MAP 2 – NORTH AMERICA - CONTEXT MAP



MAP 2 – Rideau Canal - NOMINATED PROPERTY

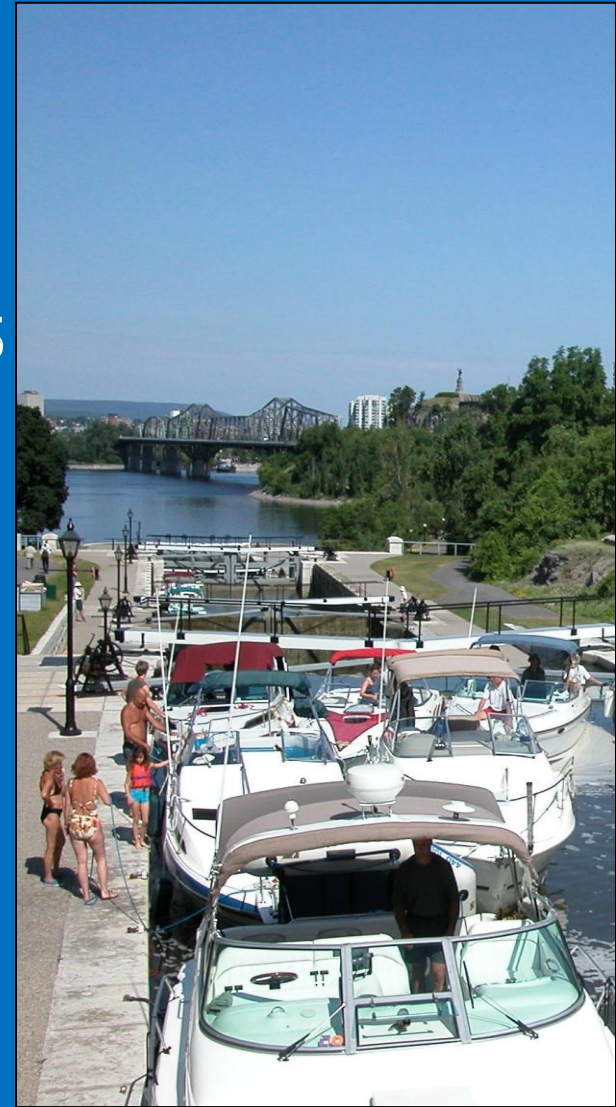




The Rideau Canal Corridor – A Unique Heritage Region

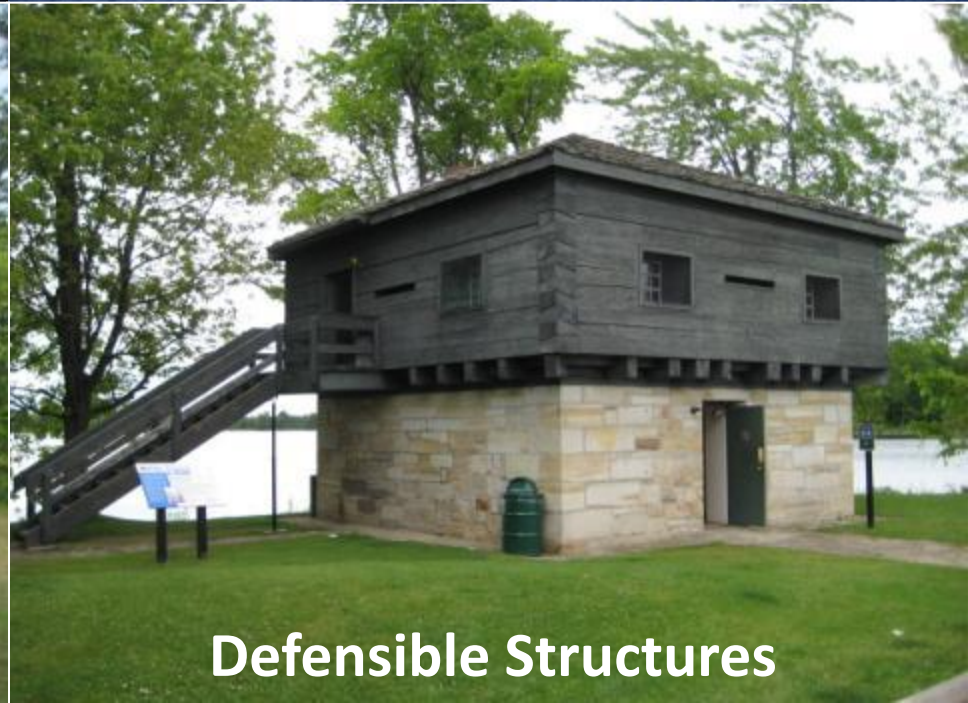
The Rideau Canal has been honoured with many distinctions:

- National Historic Site of Canada 1925
- Canadian Heritage River 2000
- UNESCO Biosphere Reserve 2002
- UNESCO World Heritage Site 2007
- National Geographic Society 2008
- Google World Wonders 2012





Engineering Technology



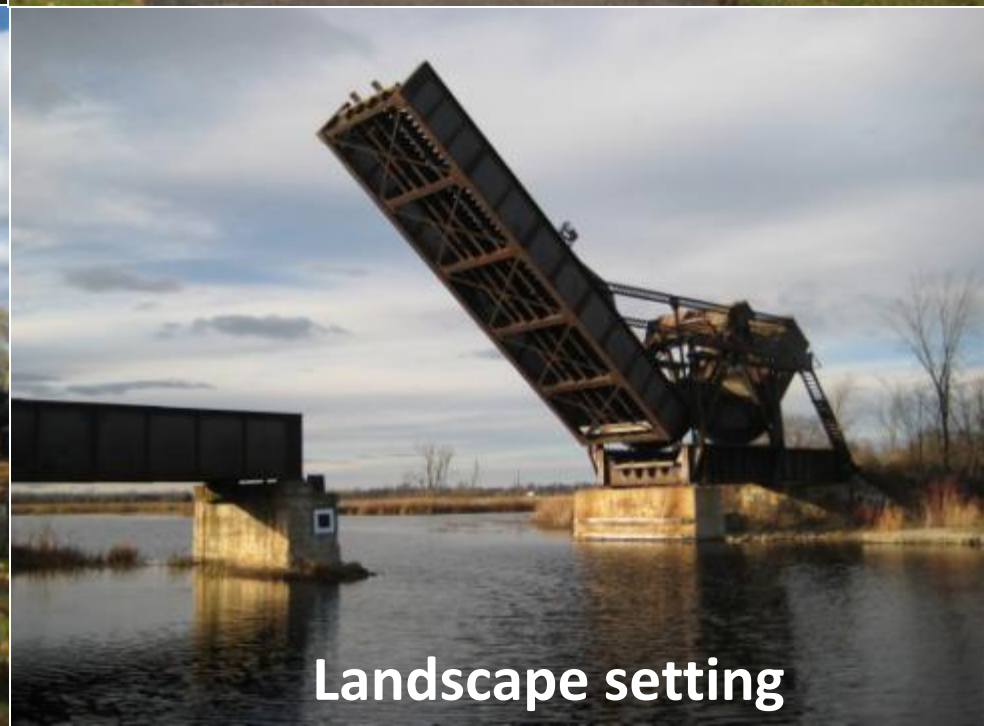
Defensible Structures



Landscape setting



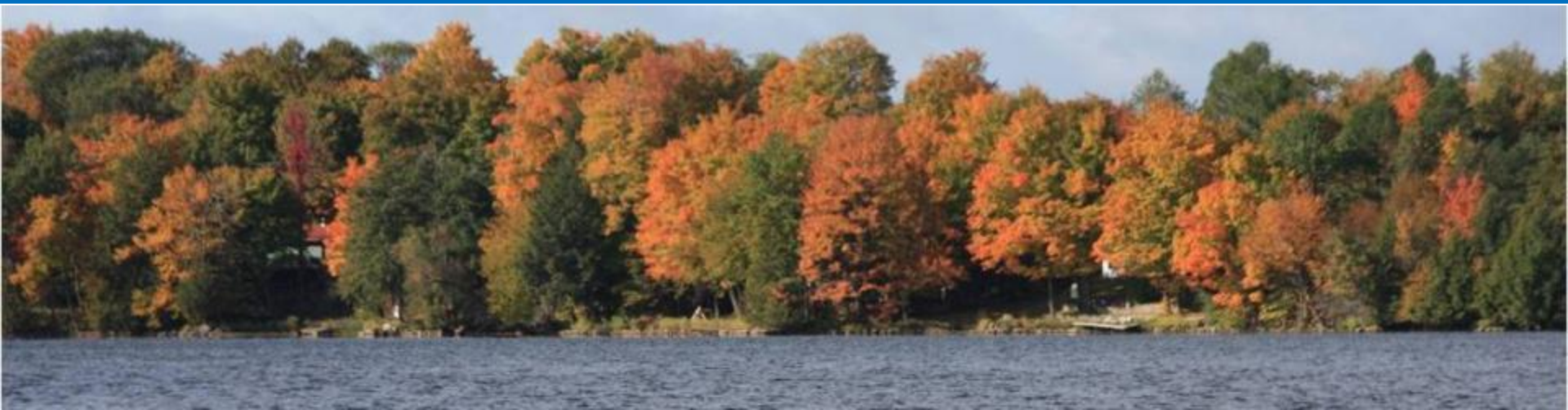
Landscape setting



Landscape setting

World Heritage Committee's Recommendation

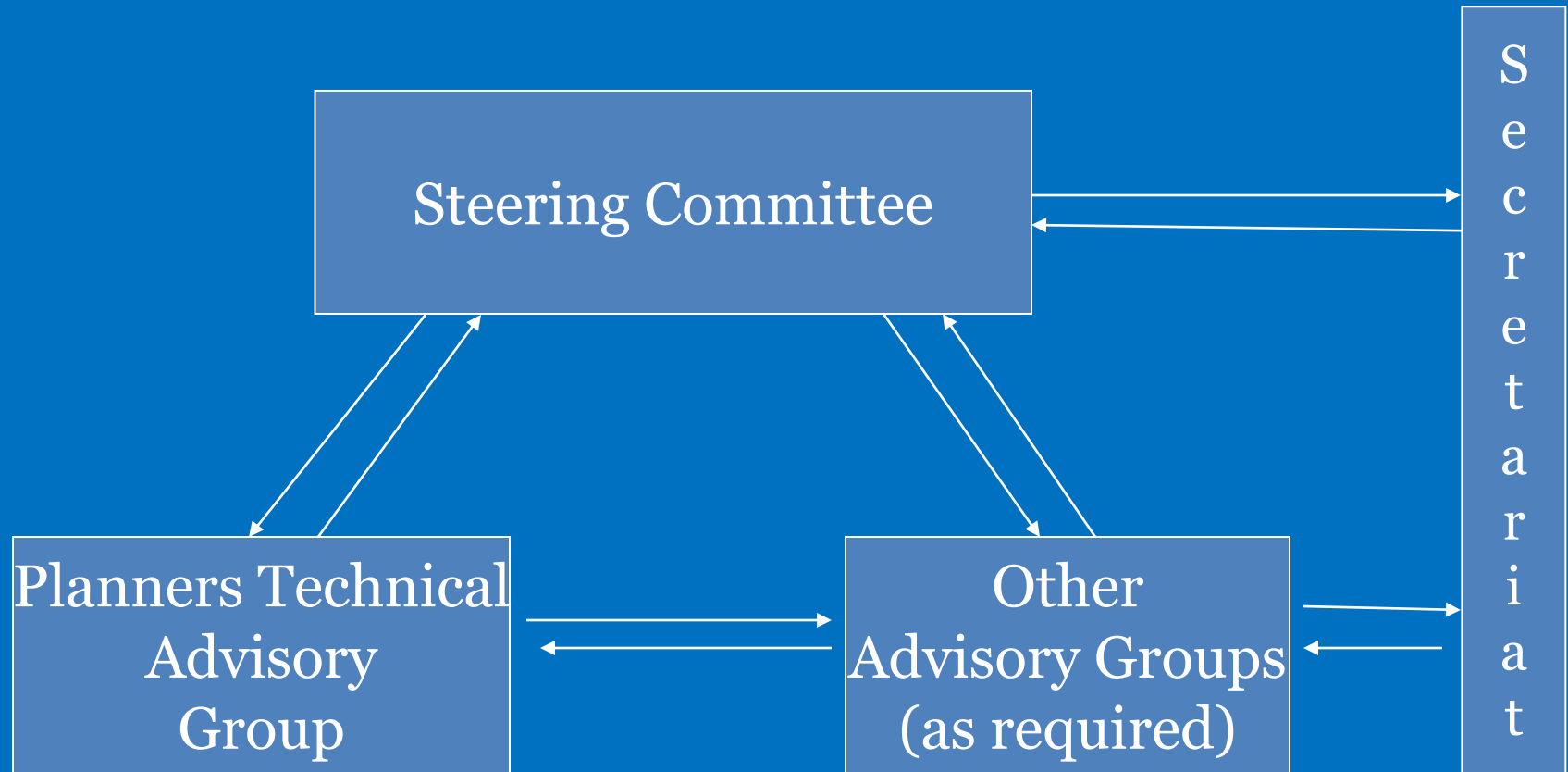
“... following the completion of the study of the visual setting of the canal, consideration is given to strengthening its visual protection outside the buffer zone, in order to ensure the visual values of the setting are protected alongside environmental values.”



Jurisdictional Complexity

- 13 municipalities with approval authority over local land use planning and development, plus 3 upper-tier levels
- Provincial ministries (8+) and 2 conservation authorities responsible for land use planning, natural environment, cultural heritage, mining activity, transportation, agriculture, water quality and tourism
- Federal agencies (3+) with responsibility for federal lands (Parks Canada, National Capital Commission, Department of National Defence)
- Many active not-for-profit organizations, citizens groups and countless private property owners and businesses

Rideau Corridor Landscape Strategy



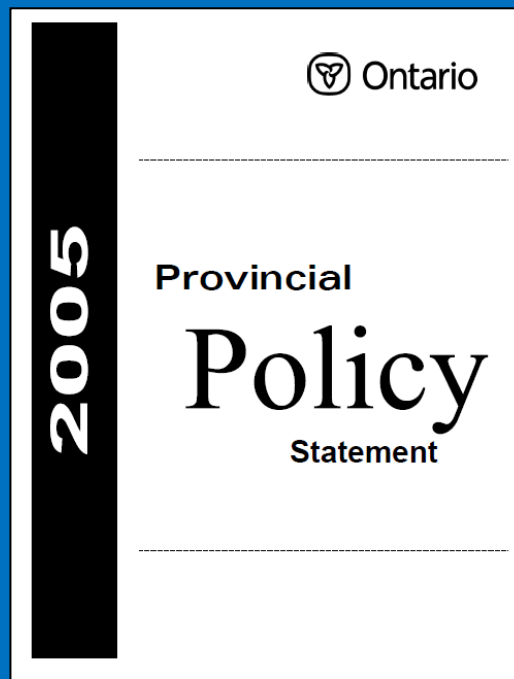
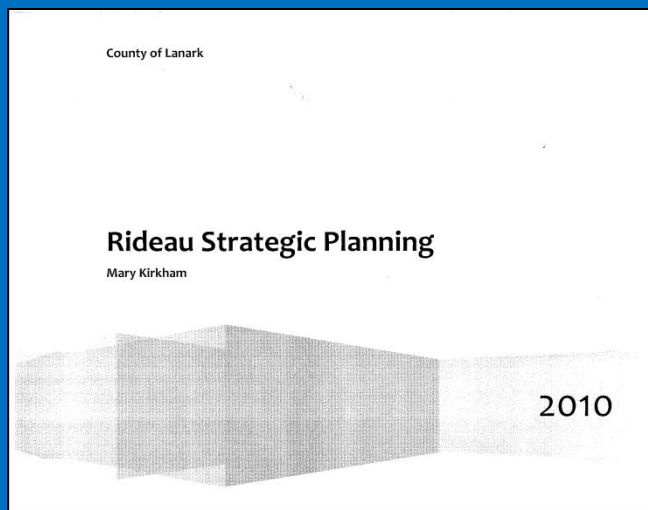
Strategy Representatives

- 2 First Nations communities
- 13 municipalities
- 3 counties
- 2 conservation authorities
- The Province of Ontario, represented by the Ministry of Municipal Affairs and Housing
- 2 federal agencies – Parks Canada and the National Capital Commission



Key Activities: 2010-2011

- Review and analysis of existing planning policies
- Formal submission into Ontario's Provincial Policy Statement review
- Compilation of GIS mapping for the entire corridor
- Development of a Statement of Work and a Request for Proposals to hire a consultant to undertake a Landscape Character Assessment and provide planning and management recommendations

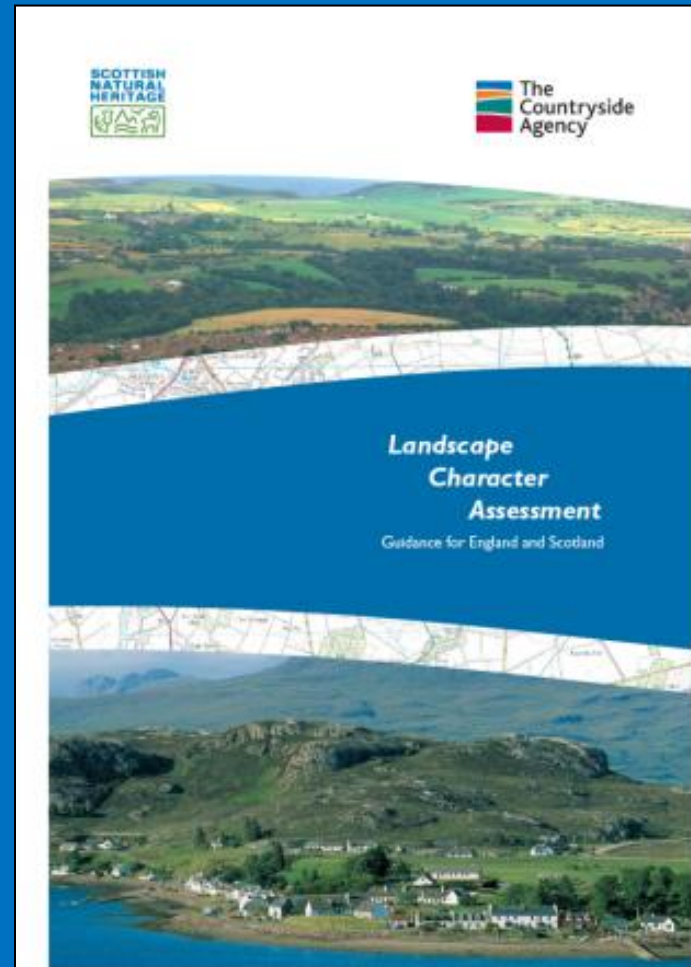




Key Activity 2012:
Landscape Character Assessment &
Planning and Management
Recommendations Report

Landscape Character Assessment

- The distinctive and recognizable pattern of elements in the landscape that give a locality its “sense of place”
- To identify key features and values of the Rideau Corridor in order to support more effective planning and management of the Rideau Corridor’s landscapes into the future



Study Process

1. Information Scoping

- exploring what information is already out there

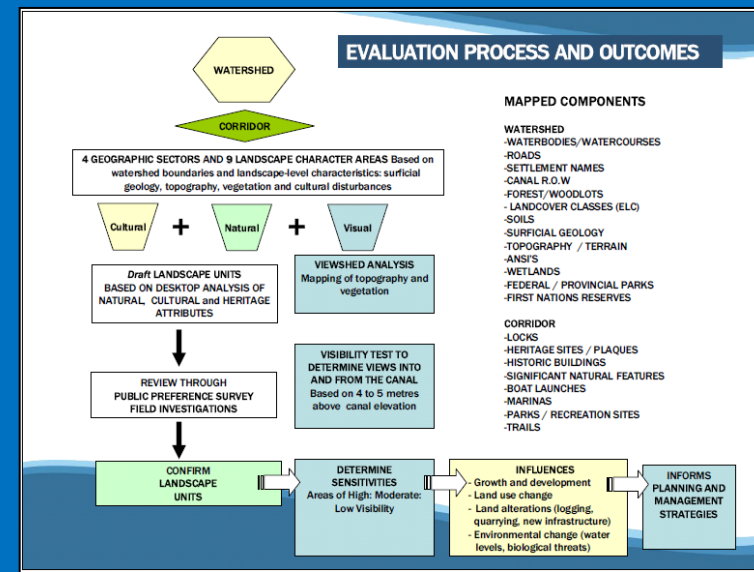
2. Desk-based research

- review of past character descriptions, documenting the land use, cultural features, natural conditions, policy areas and special visual resources in the Corridor

3. Field Evaluation

- On land and water

4. Final Report



EVALUATION PROCESS AND OUTCOMES

MAPPED COMPONENTS

WATERSHED

- WATERBODIES/WATERCOURSES
- ROADS
- SETTLEMENT NAMES
- CANAL R.O.W
- FOREST/WOODLOTS
- LANDCOVER CLASSES (ELC)
- SOILS
- SURFICIAL GEOLOGY
- TOPOGRAPHY / TERRAIN
- ANSI'S
- WETLANDS
- FEDERAL / PROVINCIAL PARKS
- FIRST NATIONS RESERVES

CORRIDOR

- LOCKS
- HERITAGE SITES / PLAQUES
- HISTORIC BUILDINGS
- SIGNIFICANT NATURAL FEATURES
- BOAT LAUNCHES
- MARINAS
- PARKS / RECREATION SITES
- TRAILS

WATERSHED

CORRIDOR

4 GEOGRAPHIC SECTORS AND 9 LANDSCAPE CHARACTER AREAS Based on watershed boundaries and landscape-level characteristics: surficial geology, topography, vegetation and cultural disturbances

Cultural

+

Natural

+

Visual

Draft LANDSCAPE UNITS
BASED ON DESKTOP ANALYSIS OF
NATURAL, CULTURAL and HERITAGE
ATTRIBUTES

VIEWSHED ANALYSIS
Mapping of topography and
vegetation

REVIEW THROUGH
PUBLIC PREFERENCE SURVEY
FIELD INVESTIGATIONS

VISIBILITY TEST TO
DETERMINE VIEWS INTO
AND FROM THE CANAL
Based on 4 to 5 metres
above canal elevation

CONFIRM
LANDSCAPE
UNITS

DETERMINE
SENSITIVITIES
Areas of High: Moderate:
Low Visibility

INFLUENCES

- Growth and development
- Land use change
- Land alterations (logging, quarrying, new infrastructure)
- Environmental change (water levels, biological threats)

INFORMS
PLANNING AND
MANAGEMENT
STRATEGIES

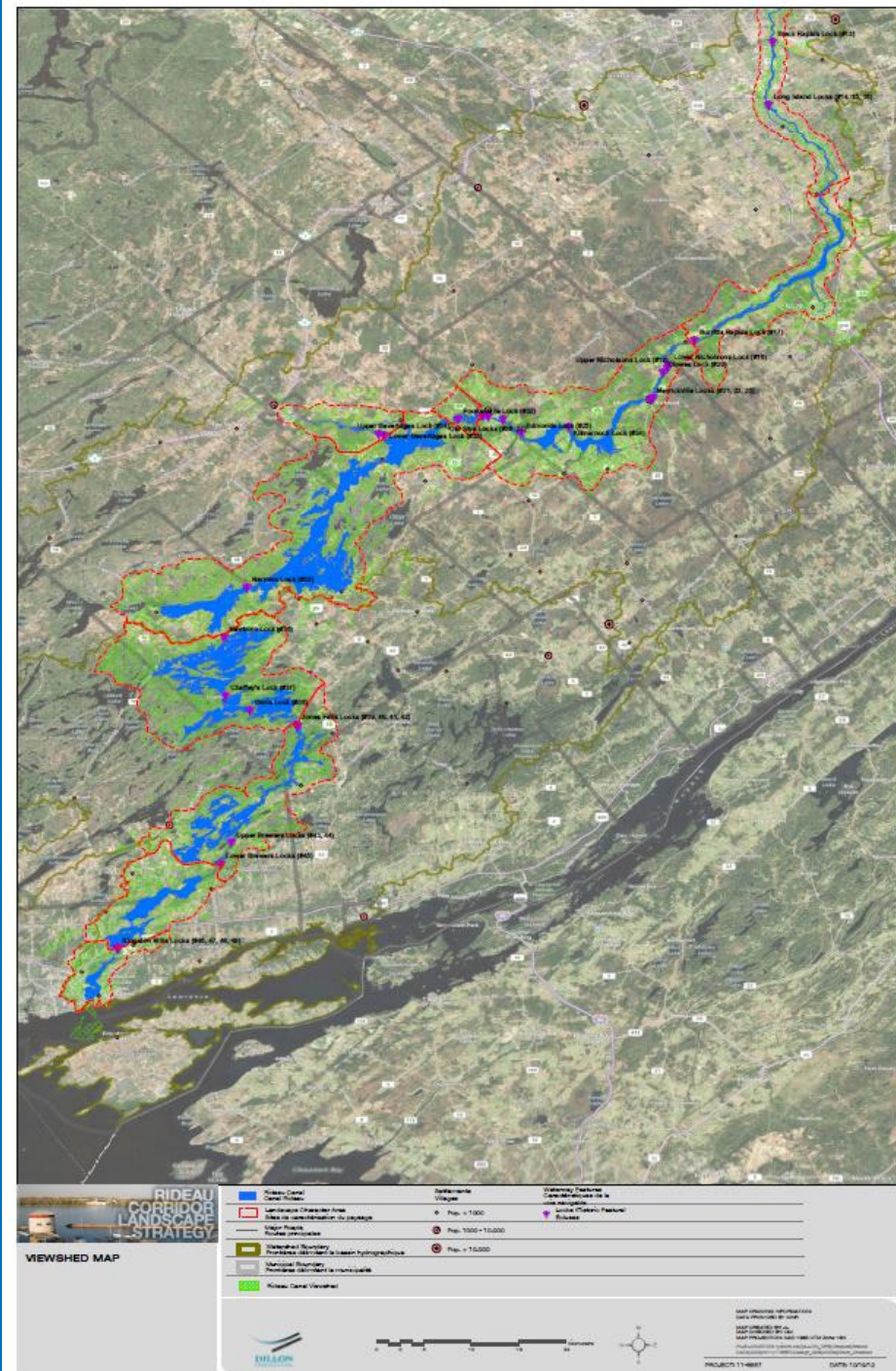
Public Engagement

- Throughout the project:
 - RCLS website: www.pc.gc.ca/rideau
 - Project website: www.rcls-sacr.ca
 - Infobulletins, communiques, videos with the Chair
 - Twitter and Facebook updates, Flickr photo database
 - Two rounds of public consultation workshops, March and August (8 in total)
 - Visual Preference Survey
 - On-water field work



Viewshed Analysis

- Mapping of topography and vegetation
- Visibility test to determine views into and from the canal
 - Based on 4 to 5 metres above the canal elevation to simulate view from top of large boat

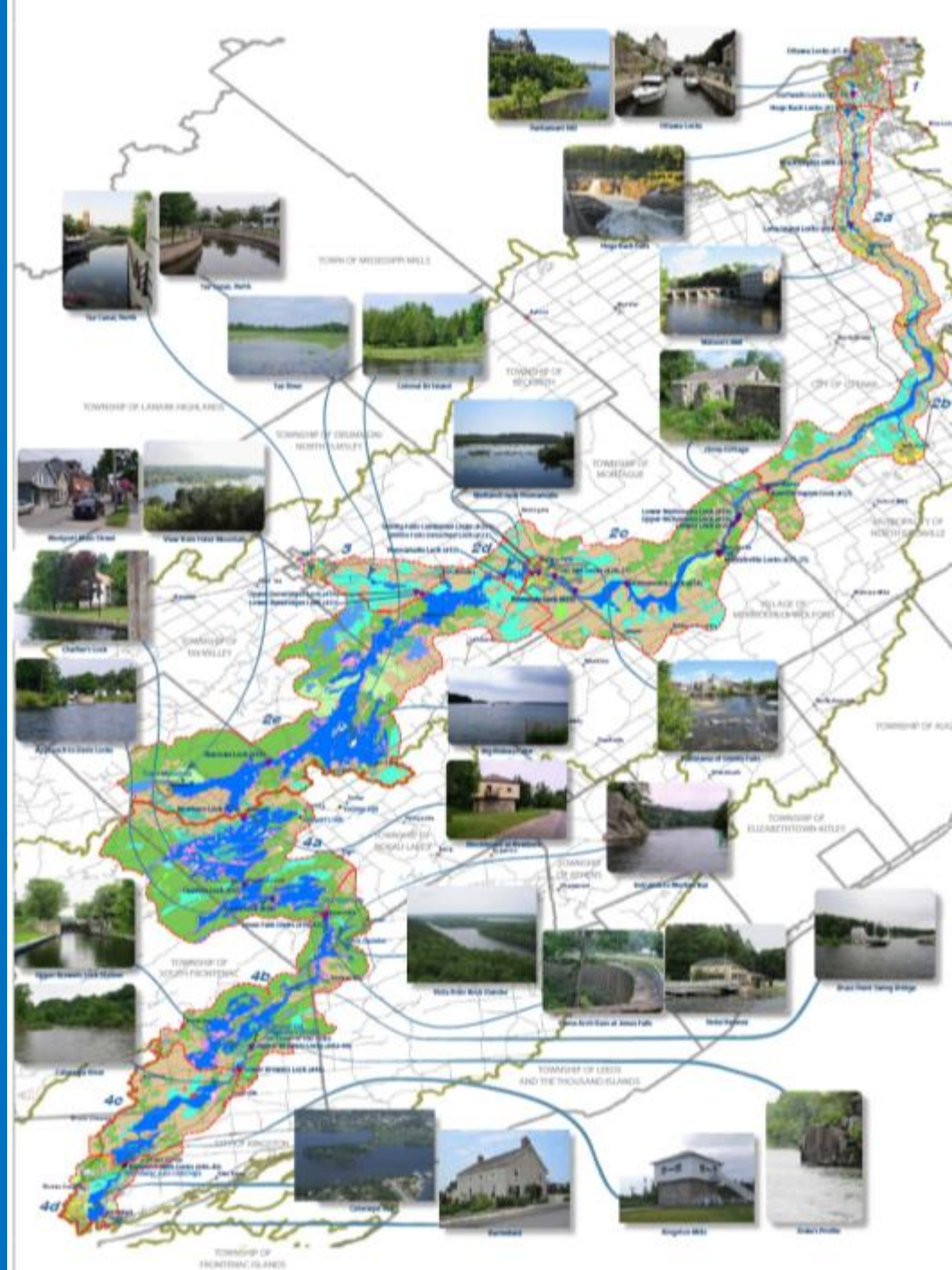


- Heritage/culture
- Nature/recreation
- Tourism/economy
- Other valuable aspect

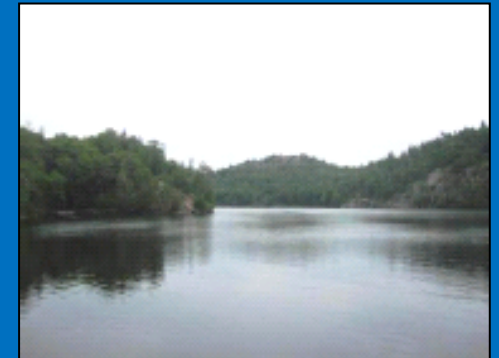
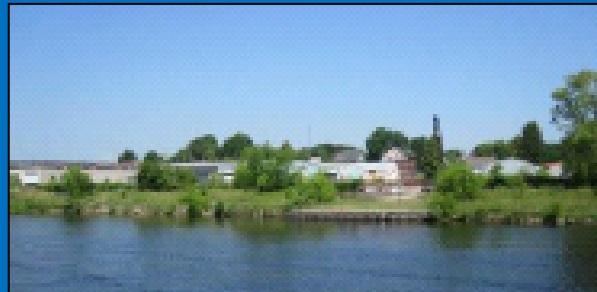
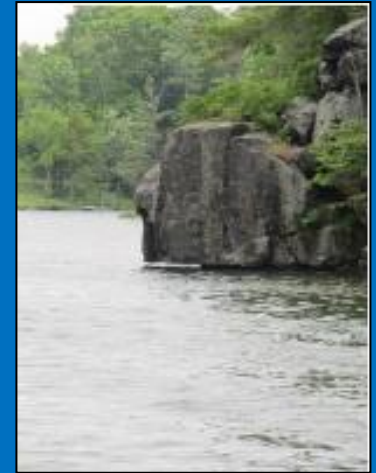


Landscape Character Areas and Values

- 4 geographic sectors, 12 landscape character areas, 19 landscape character units based on:
 - Watershed divide in Upper Rideau Lake
 - Evolution of the canal
 - Landscape characteristics



Visual Preference Survey



Planning & Management Recommendations

- Tools should be part of a coordinated, comprehensive and integrated approach that addresses priority issues
- Implementable, suitable to scale and resources of varying jurisdictions
- Jurisdictionally appropriate
- The approaches have varying degrees of effectiveness and appropriateness relative to the sensitivity of the landscape
- Activity Groups:
 - Regulatory and Quasi-regulatory
 - Community Based
 - Operational
 - Communication



Current Issues and Priorities for Action

- Key landscape issues relate to :
 - Negative visual impacts of development from the canal
 - Unhealthy shorelines and shoreline management
 - Close proximity of development to the shoreline
- Determining Priorities:
 - “Carrot and stick” philosophy to manage issues coupled with engagement to strengthen relationships
 - Build a strategy with approaches that mitigate existing issues and approaches that can minimize or eliminate issues arising from new development



Priority Planning & Management Approaches

	Issues addressed	Incentive, control or engagement	Mitigate existing issues or minimize new issues	Landscape sensitivity	Timeframe for operationalizing
Regulatory and quasi-regulatory					
Regulations governing Canal use	Negative visual impacts, shoreline impacts, erosion, proximity of development	Control	Minimize new issues	High, Medium	3 to 5 years
Permitting of in-water works	Permitting, negative visual impacts, shoreline impacts, erosion, proximity of development	Control	Minimize new issues	High, Medium	1 to 2 years
Guidelines – building and site design	Negative visual impacts, shoreline impacts, erosion, proximity of development	Control	Minimize new issues	High, Medium	2 to 3 years
Guidelines – visual impact assessment	Negative visual impacts	Control	Minimize new issues	High, Medium	2 to 3 years

Priority Planning & Management Approaches

	Issues addressed	Incentive, control or engagement	Mitigate existing issues or minimize new issues	Landscape sensitivity	Timeframe for operationalizing
Regulatory and quasi-regulatory					
Other by-laws than zoning (e.g., tree conservation, site alteration)	Negative visual impacts, shoreline impacts, erosion, proximity of development	Control	Minimize new issues	High, Medium	1 to 2 years
Development Permit System	Negative visual impacts, shoreline impacts, erosion, proximity of development	Control	Minimize new issues	High, Medium	2 to 3 years
Community-based					
Stewardship initiatives – environmental interests	Shoreline impacts, erosion	Engagement	Mitigate and minimize	All	1 to 2 years
Stewardship initiatives – agricultural interests	Shoreline impacts, erosion	Engagement	Mitigate and minimize	All	1 to 2 years
Communication					
Partnership recognition program	Is needed to complement / support the above approaches	Incentive, engagement	Mitigate and minimize	All	1 year

5-Year Implementation Plan

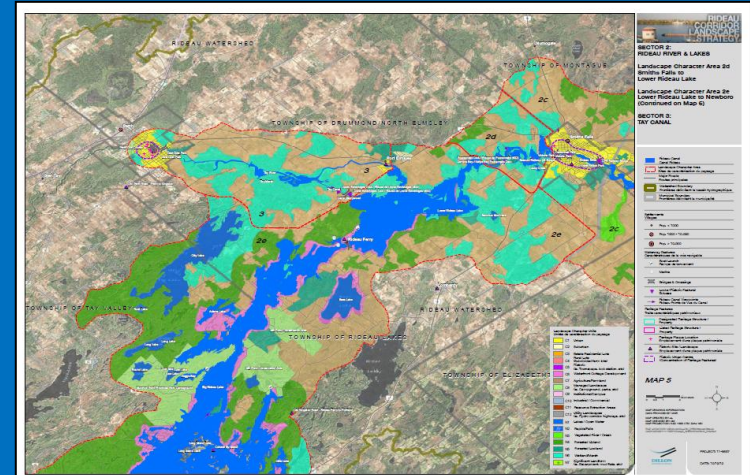
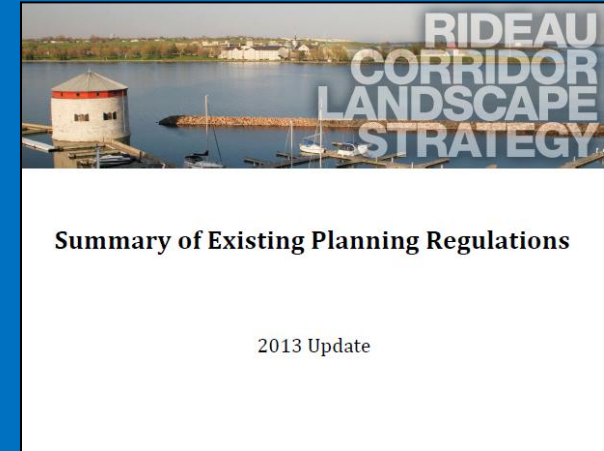
	Lead Agency	2014	2015	2016	2017	2018
Leadership and Oversight						
RCLS Steering Committee	Parks Canada	continues forward from 2012				
Regulatory and quasi-regulatory						
Regulations governing Canal use	Parks Canada					
Permitting of in-water works	Parks Canada					
Guidelines – building / site design	Parks Canada; Municipality					
Guidelines – visual impact	Parks Canada; Municipality					
Other by-laws than zoning	Municipality					
Development Permit System	Municipality					
Community-based						
Stewardship – environmental	Parks Canada; C.A.; Municipality					
Stewardship – agricultural	Parks Canada; C.A.; Municipality					
Communication						
Partnership recognition program	RCLS Steering Committee					

Legend:  Project/study undertaken

 Project/study complete and operationalized

Current and Next Steps: Implementation

- 2013 Update to 2010 Planning Policy Checklist – Review of existing planning policies, regulations that affect the Rideau Canal; identification of strengths, weaknesses, opportunities
- Corridor-wide GIS database for RCLS use
- 10 Principles for Good Shoreline Development
- Consistency in Official Plan policies and bylaws
- Enhanced public education and communication of jurisdictional responsibilities



Key Outcomes of the Report

- Regional definitions of the Corridor's landscape character areas and units
- Regional scale delineation of the Corridor's viewshed
- An understanding of the many stakeholder interests in the Corridor's landscape
- An understanding of the many issues facing the sustainability of the Corridor's landscape character
- Testing particular assertions regarding the public preference of particular landscape characteristics through a Visual Preference Survey
- Identification of the planning and management approaches for sustaining the Corridor's landscape character and the potential stakeholders that could be involved
- An implementation plan to help guide action



RIDEAU CORRIDOR LANDSCAPE STRATEGY

More Information

www.pc.gc.ca/rideau

www.rcls-sacr.ca

rideaucanal-
info@pc.gc.ca



