

**CORPORATION OF THE VILLAGE OF MERRICKVILLE-WOLFORD
BY-LAW No. 50-2018**

Being a By-law to Amend Zoning By-law No. 23-08, as Amended

**Charlotte Street
Merrickville Ward**

(Princiotta)

WHEREAS Sections 34 and 36 of the *Planning Act*, R.S.O., 1990, Chapter P.13, authorizes Council to pass by-laws to regulate the use of lands and the character, location and use of buildings and structures within the Village of Merrickville-Wolford;

AND WHEREAS the Council of the Corporation of the Village of Merrickville-Wolford deems it advisable to amend Zoning By-law No. 23-08, as amended, as hereinafter set forth;

NOW THEREFORE the Council of the Corporation of the Village of Merrickville-Wolford enacts as follows:

1. The lands affected by this By-law are shown as outlined by heavy black lines on Schedule "A" which is attached hereto and forms part of this By-law.
2. Schedule "B" to Zoning By-law No. 23-08, as amended, is hereby further amended by removing the "h" symbol on the lands affected by this By-law.
3. Schedule "B" to Zoning By-law No. 23-08, as amended, is hereby further amended by changing the zoning on the lands affected by this By-law from "Residential Type 2" (R2) to "Residential Type 2-Exception" (R2-2).
4. Section 5.2, RESIDENTIAL TYPE 2 (R2) ZONE, of Zoning By-law No. 23-08 is hereby amended by adding a new subsection to Subsection 5.2.3, Exception Zones, as follows:

"2. R2-2: Charlotte Street (Merrickville Ward)

Notwithstanding any provisions of this By-law to the contrary, on the lands zoned R2-2, the minimum setback from a watercourse shall be 15 m."

This By-law given its first and second readings on November 13, 2018.

This By-law given its third and final reading and passed under the Corporate Seal on November 13, 2018.



Mayor
(D. Nash)



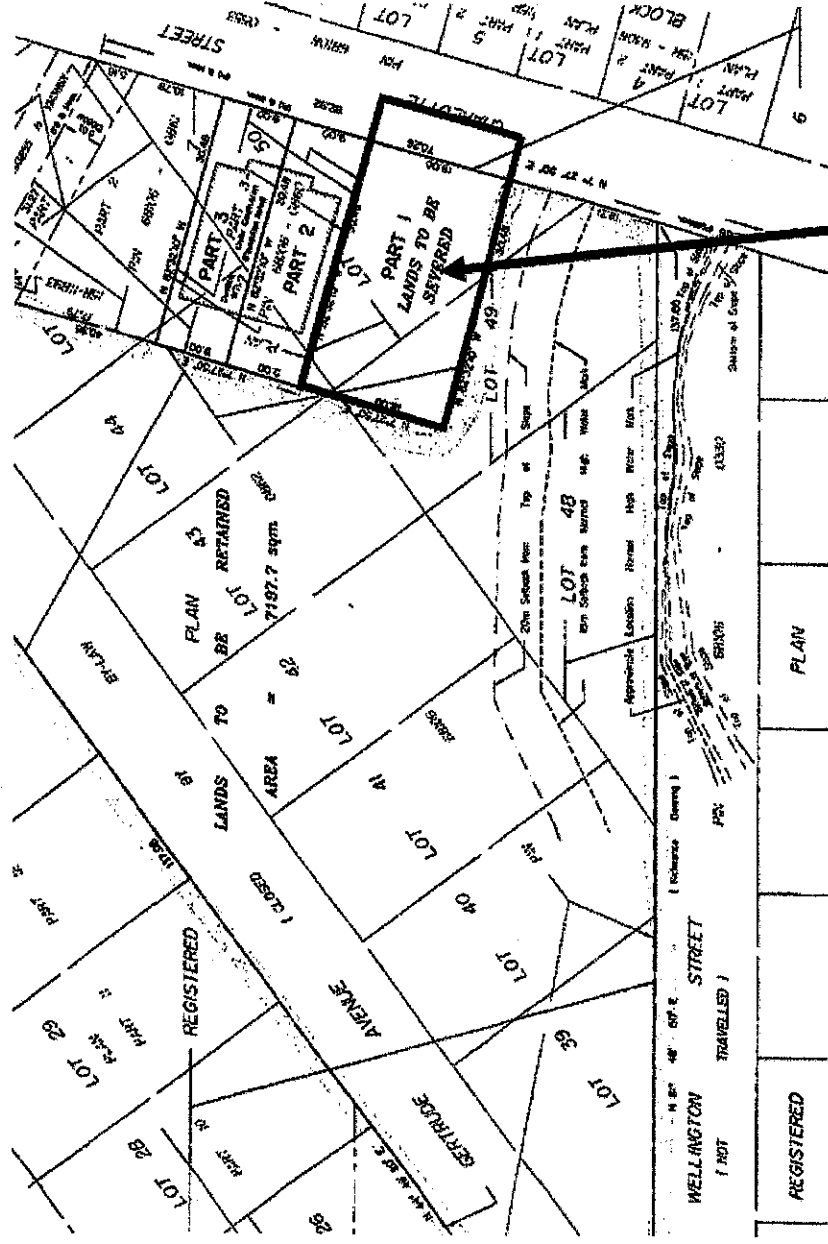
CAO Clerk/Economic Development Director
(D. Robertson)

Schedule "A" to By-law No. 50-2018

VILLAGE OF MERRICKVILLE-WOLFORD

Charlotte Street

Merrickville Ward



**Area re-zoned from RESIDENTIAL TYPE 2 holding (R2h)
to RESIDENTIAL TYPE 2- Exception (R2-2)**