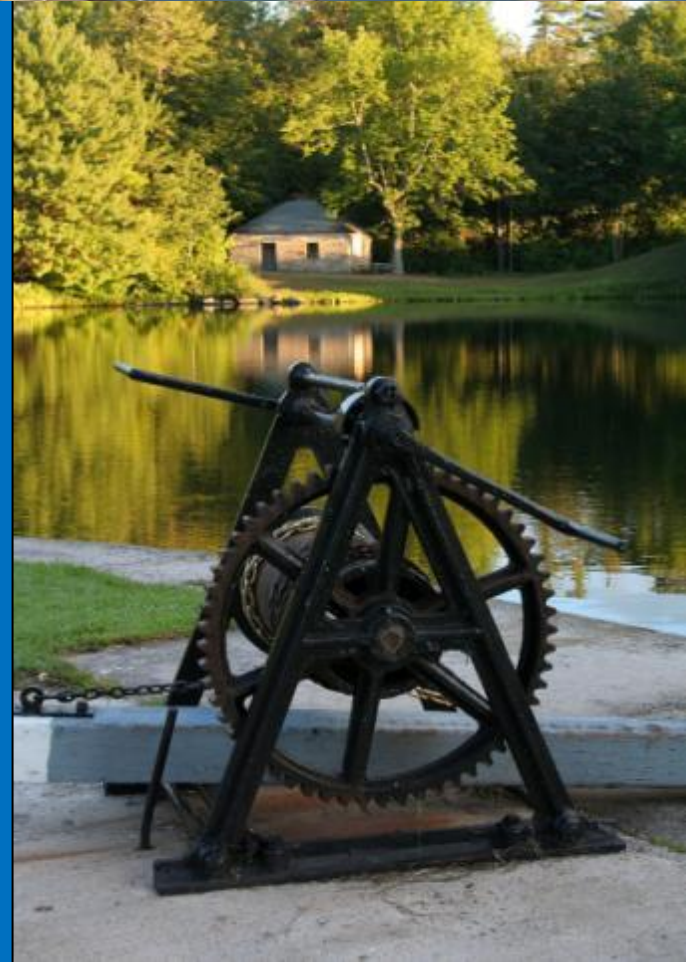


A wide-angle photograph of the Rideau Canal. On the left, a white stone tower with a red roof stands on a small island. Several sailboats are docked at a wooden pier in the foreground. In the background, a town with white buildings is visible across the water.

RIDEAU CORRIDOR LANDSCAPE STRATEGY

Rideau Corridor Landscape Strategy: Collaborating to protect Ontario's UNESCO World Heritage Site

Club of Rome Annual Conference
21 September 2013

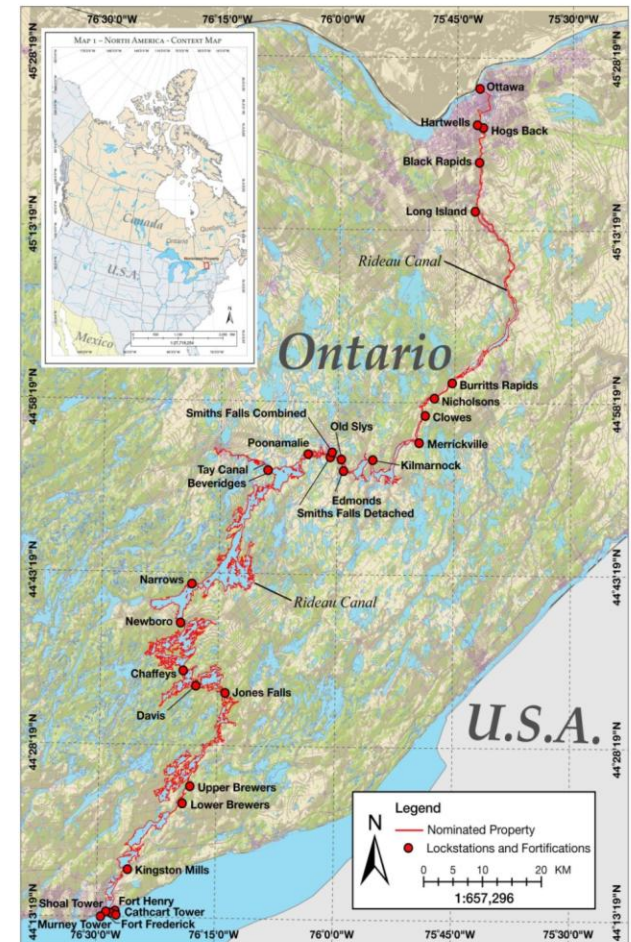


The Rideau Canal Corridor – A Unique Heritage Region

The Rideau Canal has been honoured with many distinctions:

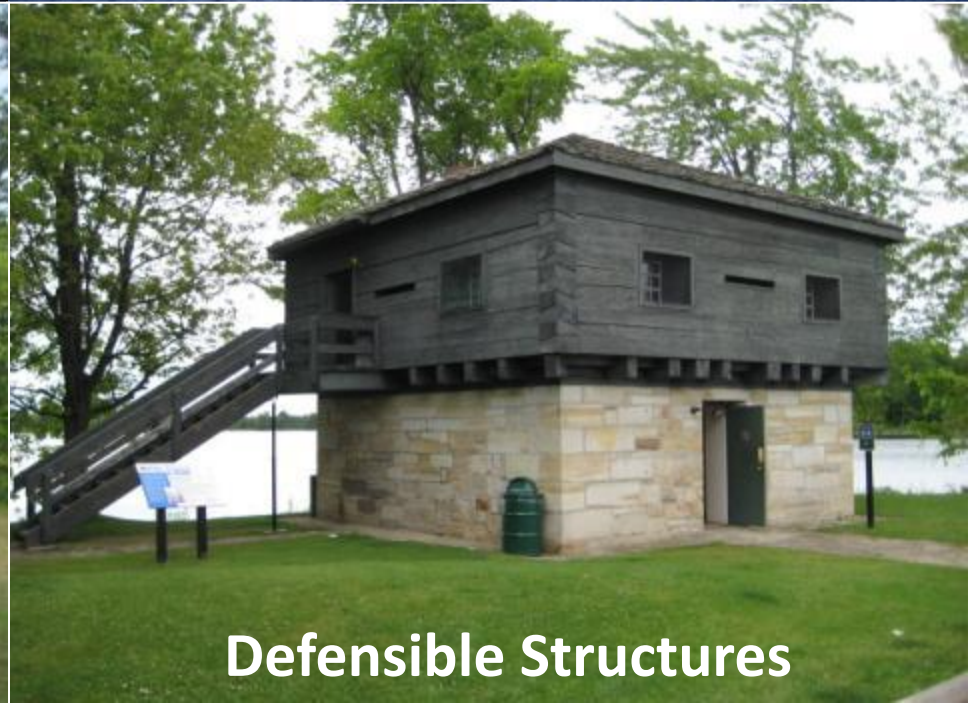
- National Historic Site of Canada 1925
- Canadian Heritage River 2000
- UNESCO Biosphere Reserve 2002
- UNESCO World Heritage Site 2007
- National Geographic Society 2008
- Google World Wonders 2012

MAP 2 – RIDEAU CANAL - NOMINATED PROPERTY





Engineering Technology



Defensible Structures

World Heritage Committee's Recommendation

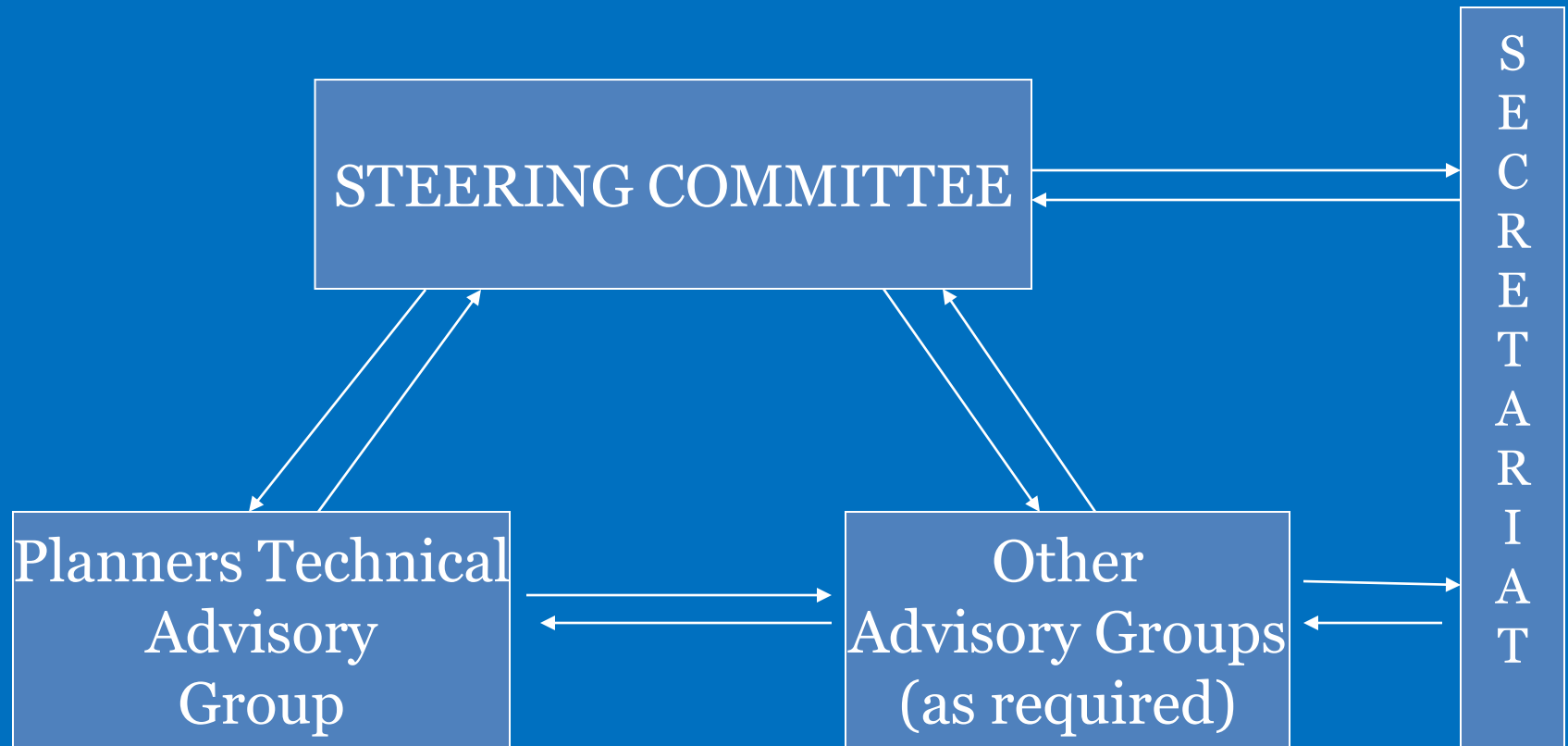
“... following the completion of the study of the visual setting of the canal, consideration is given to strengthening its visual protection outside the buffer zone, in order to ensure the visual values of the setting are protected alongside environmental values.”



Jurisdictional Complexity

- 13 municipalities with approval authority over local land use planning and development, plus 3 upper-tier levels
- Provincial ministries (8+) and 2 conservation authorities responsible for land use planning, natural environment, cultural heritage, mining activity, transportation, agriculture, water quality and tourism
- Federal agencies (3+) with responsibility for federal lands (Parks Canada, National Capital Commission, Department of National Defence)
- Many active not-for-profit organizations, citizens groups and countless private property owners and businesses

Rideau Corridor Landscape Strategy



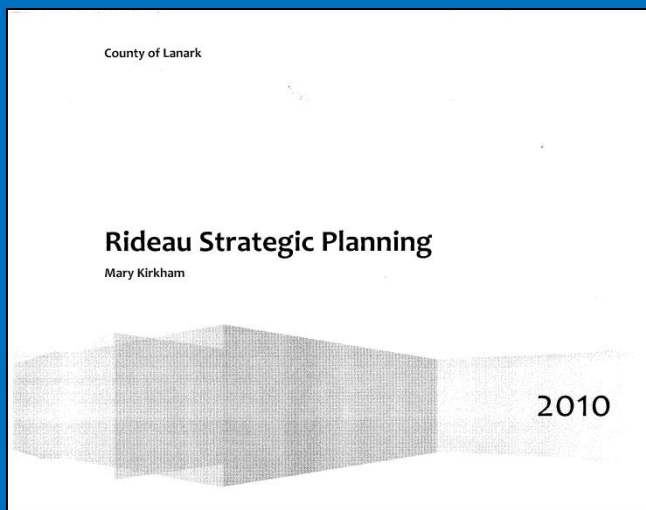
Strategy Representatives

- 2 First Nations communities
- 13 municipalities
- 3 counties
- 2 conservation authorities
- The Province of Ontario, represented by the Ministry of Municipal Affairs and Housing
- 2 federal agencies – Parks Canada and the National Capital Commission



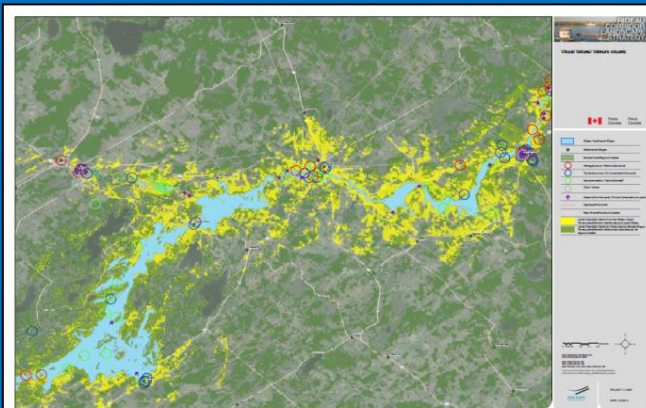
Key Activities: 2010-2011

- Review and analysis of existing planning policies
- Formal submission into Ontario's Provincial Policy Statement review
- Compilation of GIS mapping for the entire corridor
- Development of a Statement of Work and a Request for Proposals to hire a consultant to undertake a Landscape Character Assessment and provide planning and management recommendations



Key Activities: 2012

- Landscape Character Assessment and Planning and Management Recommendations Report
 - Regional definitions of the Corridor's landscape character areas and units
 - Regional scale delineation of the Corridor's viewshed
 - Multi-faceted public engagement process
 - On-water field work with members of the public
 - GIS mapping of the corridor via data sharing agreements
 - A broad suite of planning and management recommendations: regulatory and quasi-regulatory; community-based; operational; communication
 - Five-year implementation plan identifying priority approaches, lead agencies, and timeframe



5-Year Implementation Plan

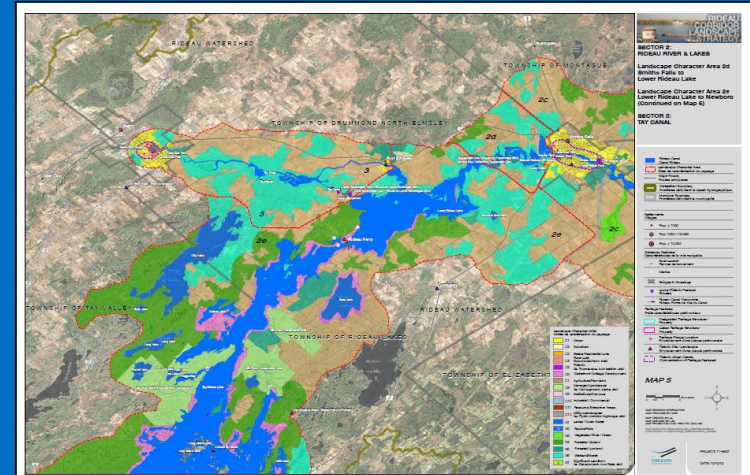
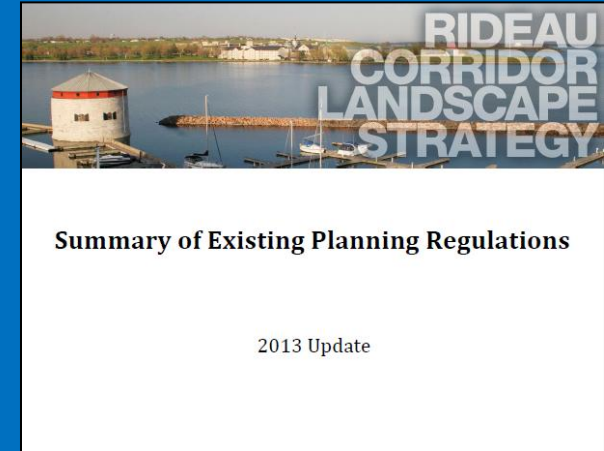
Lead Agency	2014	2015	2016	2017	2018
Leadership and Oversight					
RCLS Steering Committee	Parks Canada	continues forward from 2012			
Regulatory and quasi-regulatory					
Regulations governing Canal use	Parks Canada				
Permitting of in-water works	Parks Canada				
Guidelines – building / site design	Parks Canada; Municipality				
Guidelines – visual impact	Parks Canada; Municipality				
Other by-laws than zoning	Municipality				
Development Permit System	Municipality				
Community-based					
Stewardship – environmental	Parks Canada; C.A.; Municipality				
Stewardship – agricultural	Parks Canada; C.A.; Municipality				
Communication					
Partnership recognition program	RCLS Steering Committee				

Legend:  Project/study undertaken

 Project/study complete and operationalized

Current and Next Steps: Implementation

- 2013 Update to 2010 Planning Policy Checklist – Review of existing planning policies, regulations that affect the Rideau Canal; identification of strengths, weaknesses, opportunities
- Corridor-wide GIS database for RCLS use
- 10 Principles for Good Shoreline Development
- Consistency in Official Plan policies and bylaws
- Enhanced public education and communication of jurisdictional responsibilities





RIDEAU CORRIDOR LANDSCAPE STRATEGY

More Information

www.pc.gc.ca/rideau

www.rcls-sacr.ca

rideaucanal-
info@pc.gc.ca



